

the doublet. Some are to take the long
supporting the breeches, others for short



Rubans Cléante

- Rubans colerotte et milieu devant = $0,5\text{cm}$ de large
 - 15 m de jaune
 - 10 m d'orange

- Rubans des côtés du pantalon = $0,9\text{cm}$ de large
 - 15 m de jaune
 - 15 m d'orange

- Bouclettes aux poignets = 1cm de large
 - 10 m de jaune
 - 10 m d'orange

- Rubans des poignets et gros nœud du milieu devant = $1,2\text{cm}$ de large
 - 10 m de jaune
 - 10 m d'orange

- Nœuds des épaules = $1,5\text{cm}$ de large
 - 6 m de jaune
 - 6 m d'orange

- Nœuds en bas du pantalon = $4,7\text{cm}$ de large
 - 6 m de jaune
 - 6 m d'orange

- Nœuds pour chaussures = $4,7\text{cm}$ de large
 - 3 m de rouge

- Passpoil et biais

→ 36 m de cordon, mais pas plus épais que

→ biais: en $130\text{cm} = \underline{1,3\text{m}}$



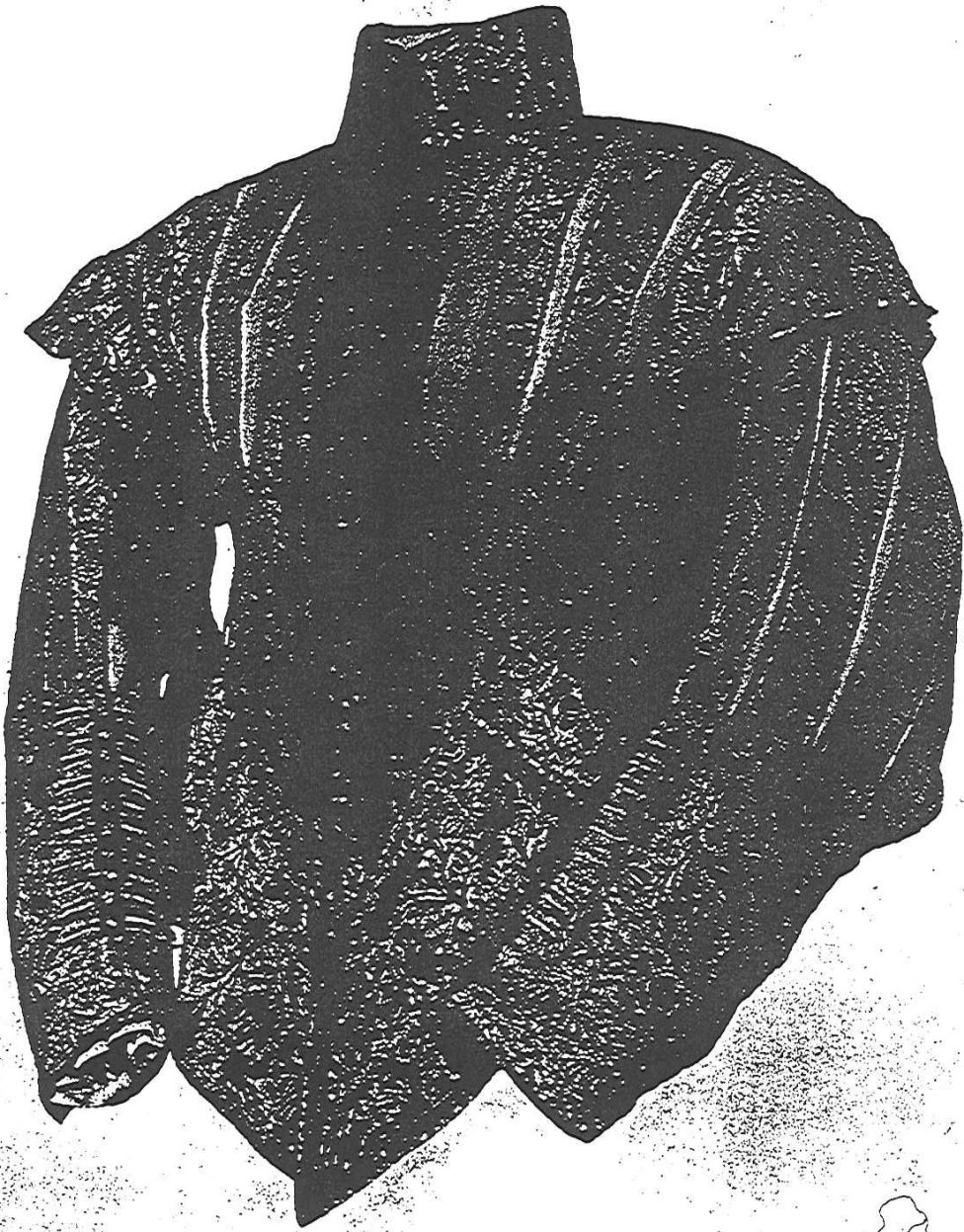


PLATE 3

The eyelet holes round the waist are for trussing laces. (See Diagram V)

Victoria and Albert Museum

veste double

1600-1680

7,9375

25,4 = 1
 3,2 = (60 inches) = 25,4
 5,2 x 41,275
 1,8 = 14,28
 2,8 = 22,225

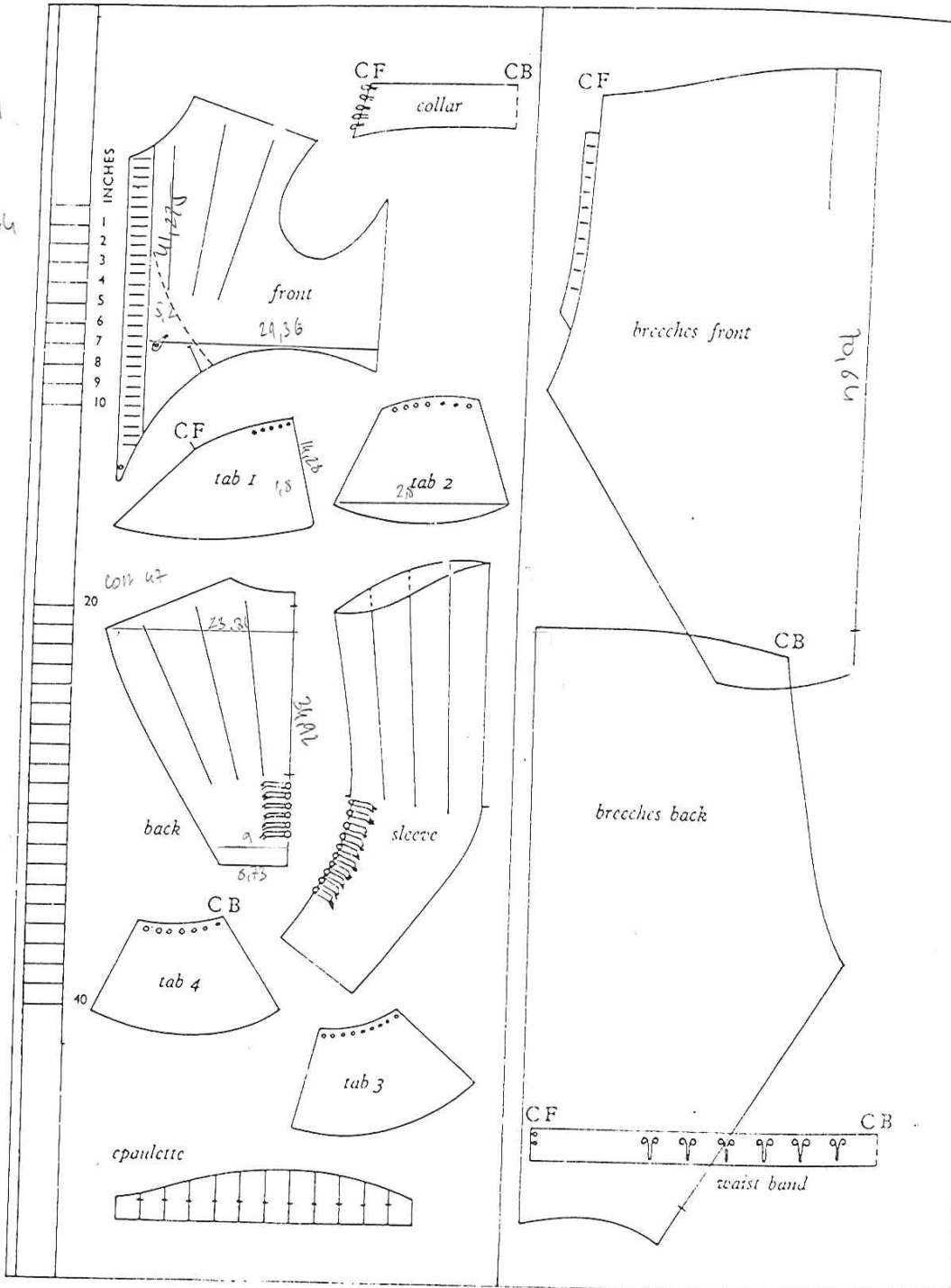


DIAGRAM V

DOUBLET 1620-35 (see Plate 3). Green silk damask, trimmed with narrow braid. The eyelet holes in the tabs are for trussing the laces (sewn to the breeches). *Victoria and Albert Museum*

DIAGRAM VI

BREECHES 1630-40. Quilted white satin. (Matching doublet similar to Diagram IV.) The fullness round the waist is set in an inverted pleat centre front and the rest gathered. The side seams are sewn to within 2½ inches from the bottom, which has a slot for a ribbon tie. *Victoria and Albert Museum*

*Sleeve
Cuffs* 1600-1680

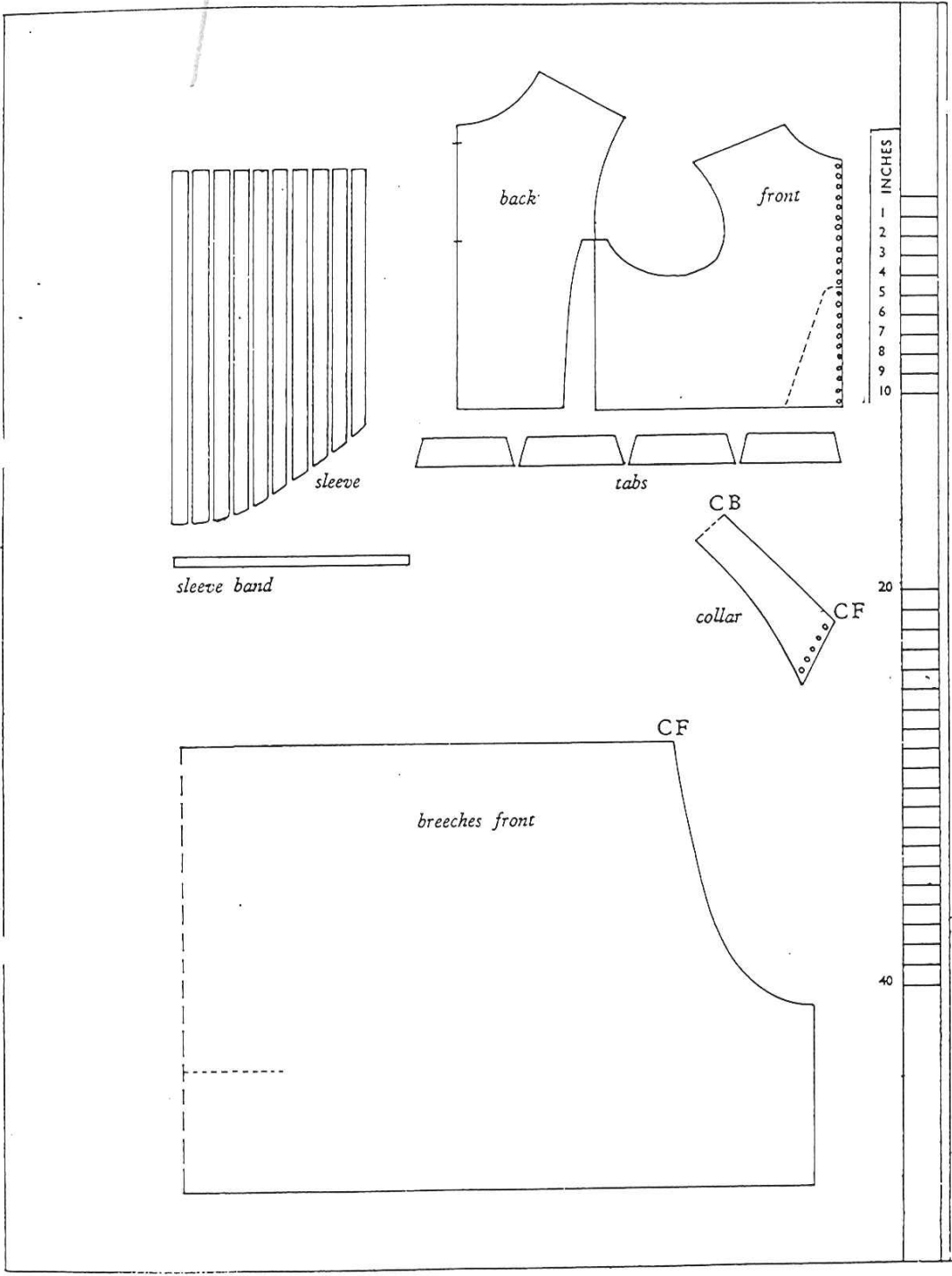
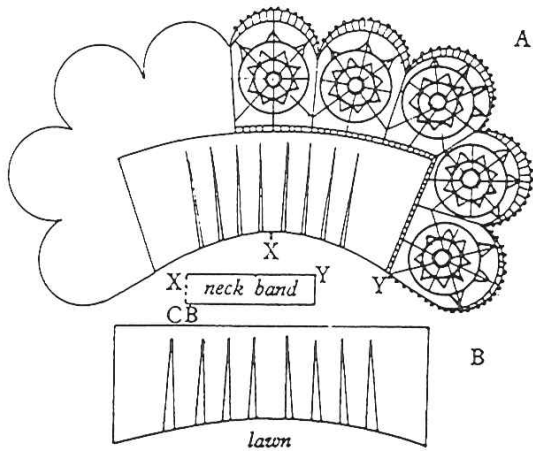
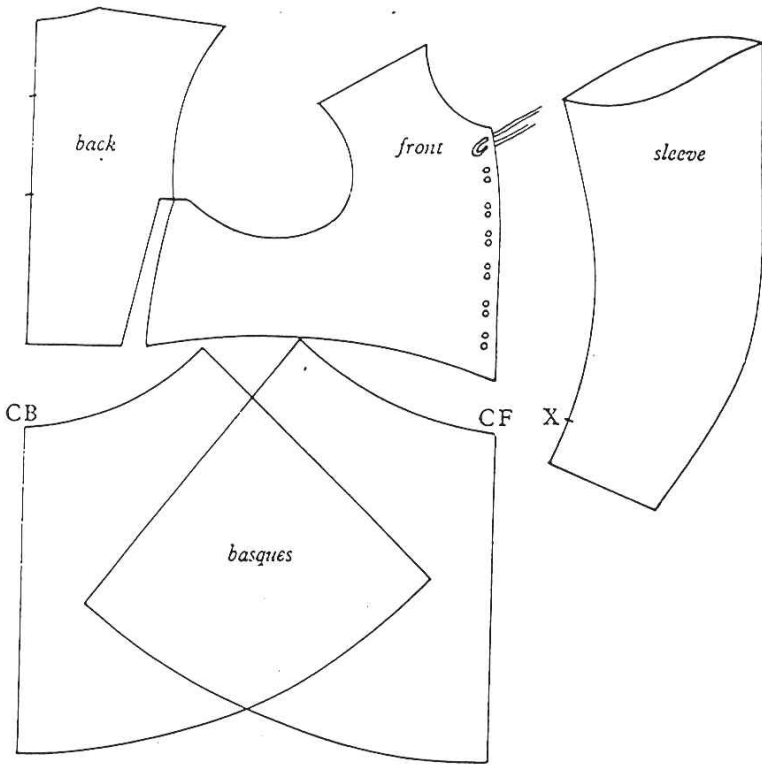


DIAGRAM XIV



col
lawn

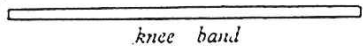
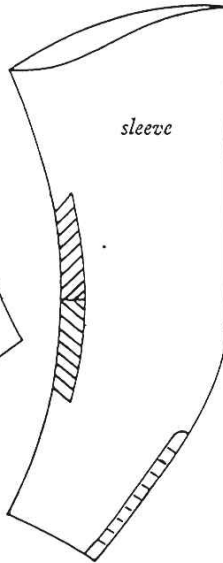
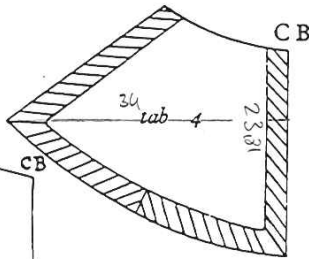
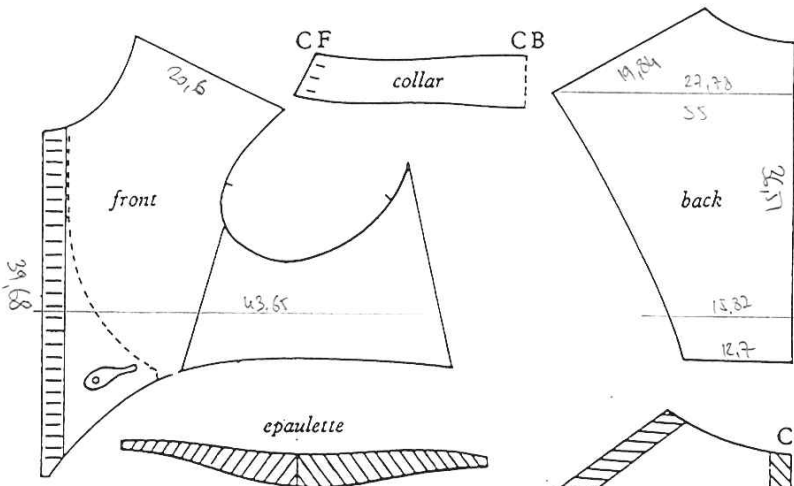
DIAGRAM VII

DOUBLET c. 1635. Buff leather. The doublet laces centre front with leather thongs. The sleeves of softer leather with front seams open to X, and bordered with silver lace. *Masner—'Kostümausstellung'*

A. COLLAR, OR BAND 1630-c.45. Lawn-edged lace—Italian Reticella, or Flemish.
B. The lawn is darted to fit round the neck.

Hr. 59, B2
119

veste
cléante



INCHES
1
2
3
4
5
6
7
8
9
10

20

40

4,6
1,6
3 =

DIAGRAM IV

waist closure

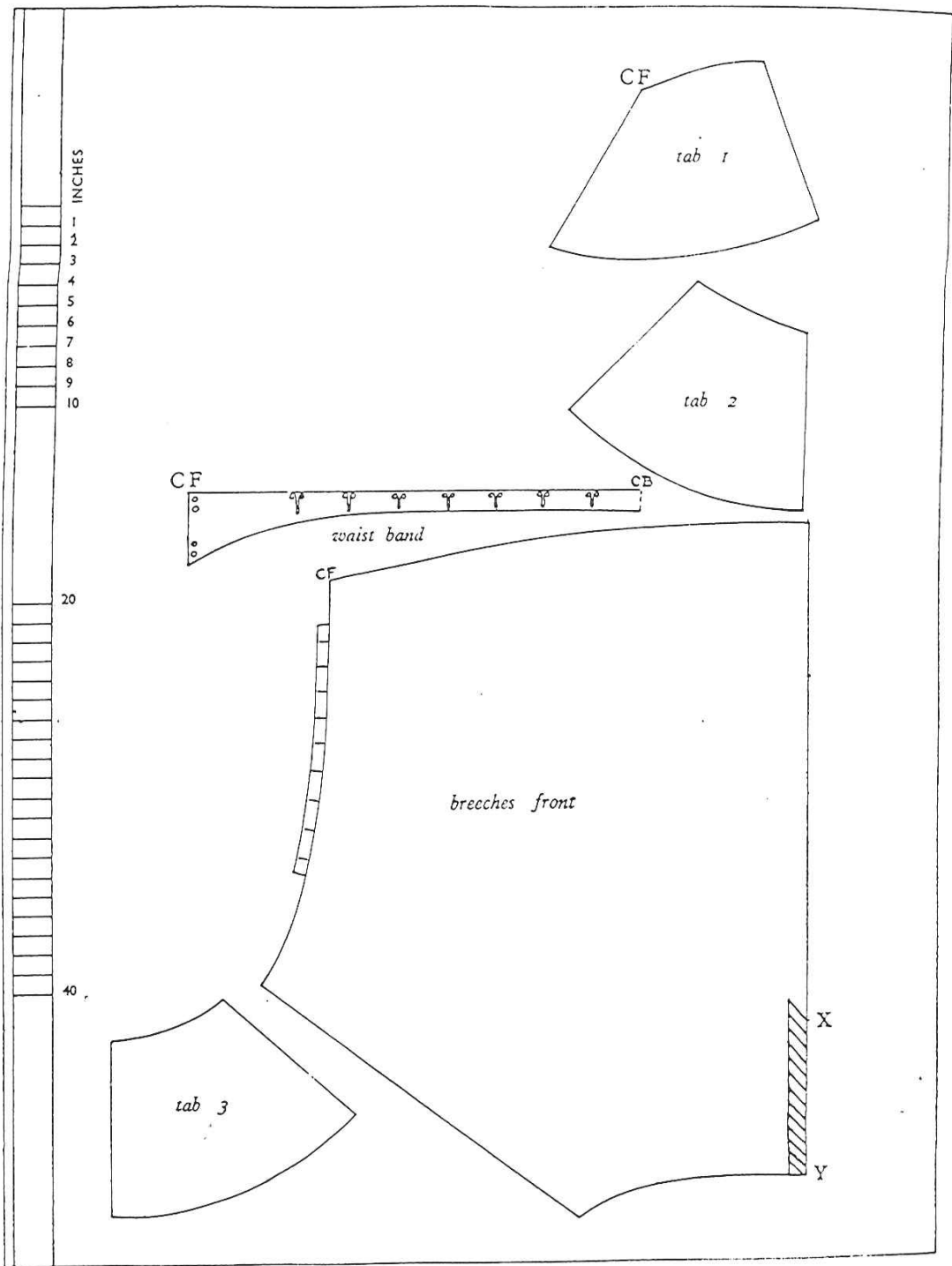


DIAGRAM IV

DOUBLET AND BREECHES c. 1630. Black damask, trimmed with narrow black braid. The fullness round the waist is set in an inverted pleat centre front, and the rest gathered. The bottom of the leg is also gathered onto a narrow band, and the side seams open from X to Y. The hooks fasten into rings sewn inside the waist of the doublet. *Victoria and Albert Museum*

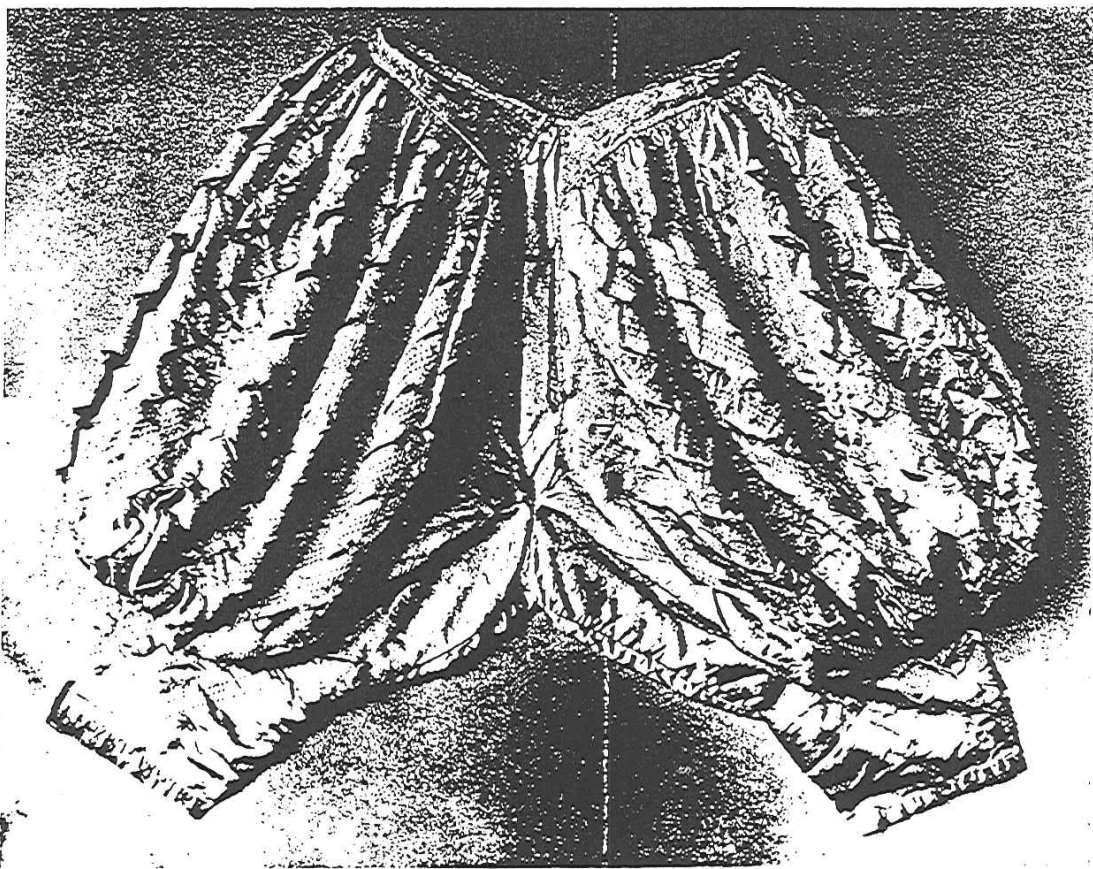
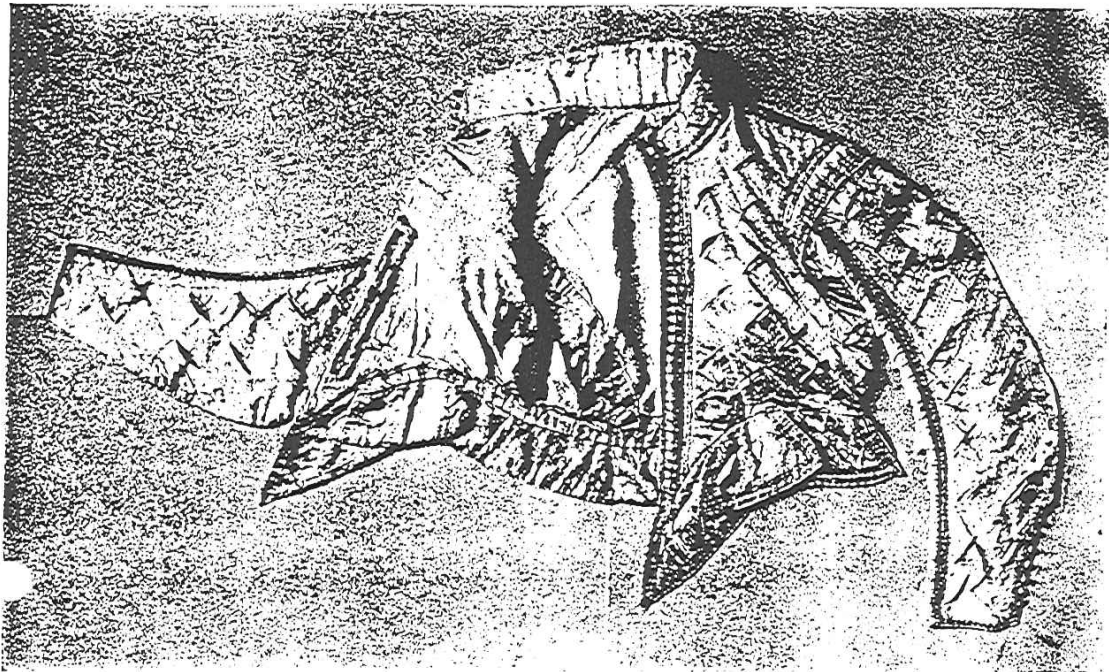


PLATE I

1610-20. (*above*) The belly-piece and band with lacing eyelets can be seen on the inside of this doublet. (*below*) Breeches with canions. This suit is patterned by slashes and pinking. (See Diagram III)

Victoria and Albert Museum

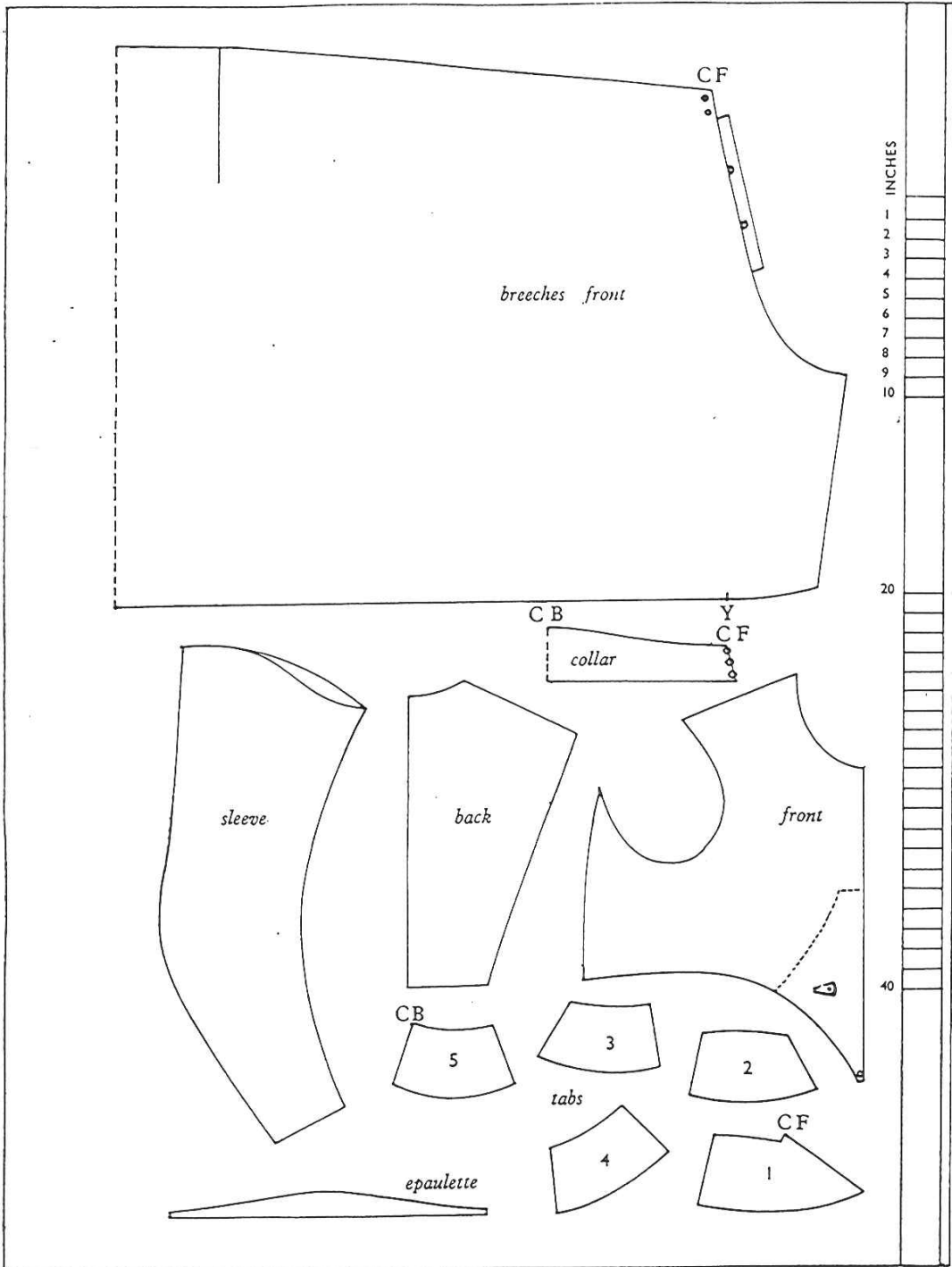


DIAGRAM III

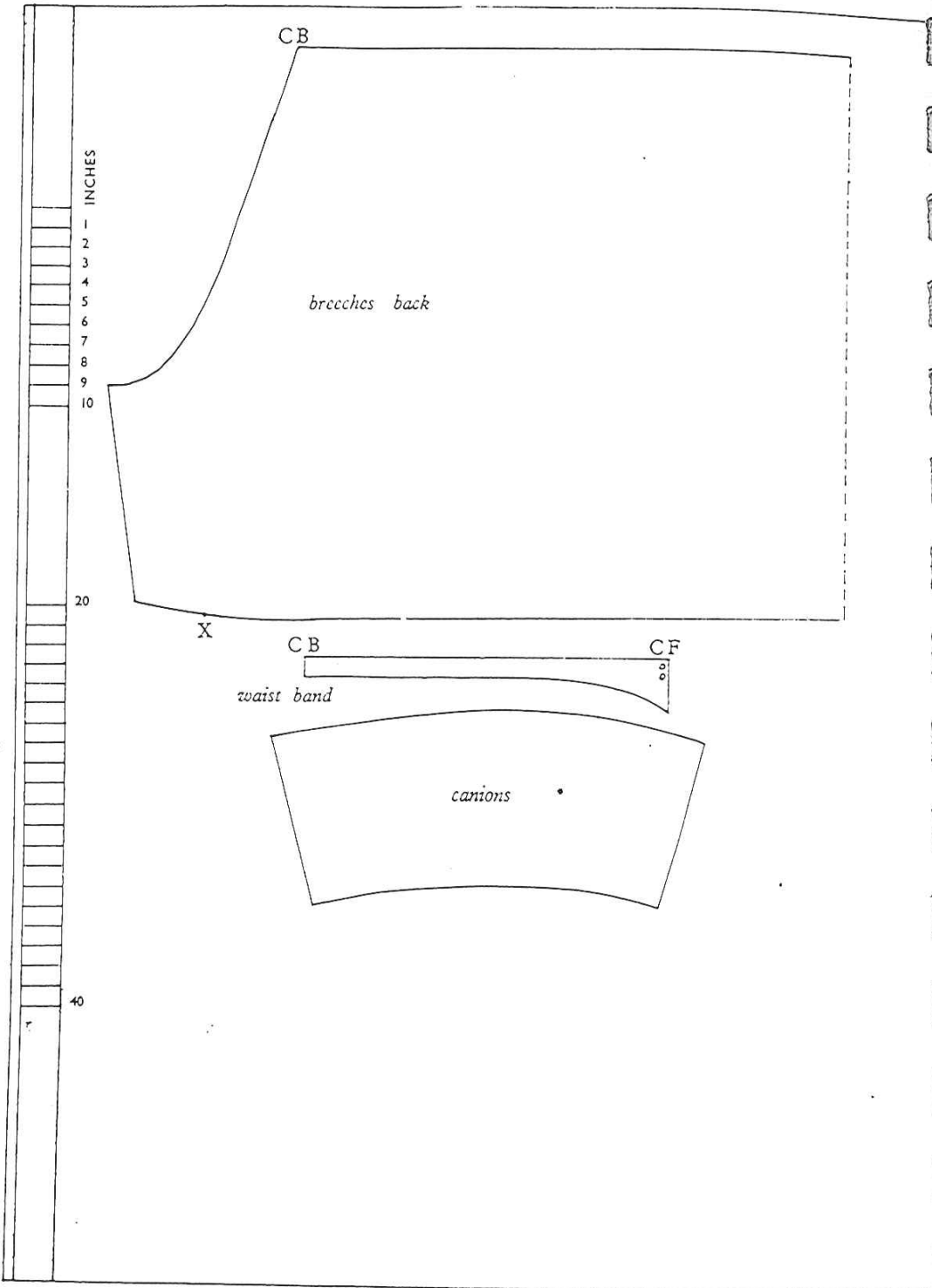


DIAGRAM III

DOUBLET AND BREECHES c. 1610-20 (see Plate 1). Cream satin over blue silk, both materials cut and pinked. The seams of the doublet, sleeves, edges of epaulettes and tabs, are outlined with two rows of narrow braid. There are 35 buttons up the centre front. The breeches are gathered to the waistband at the top, and to the canions from X to Y. *Victoria and Albert Museum*