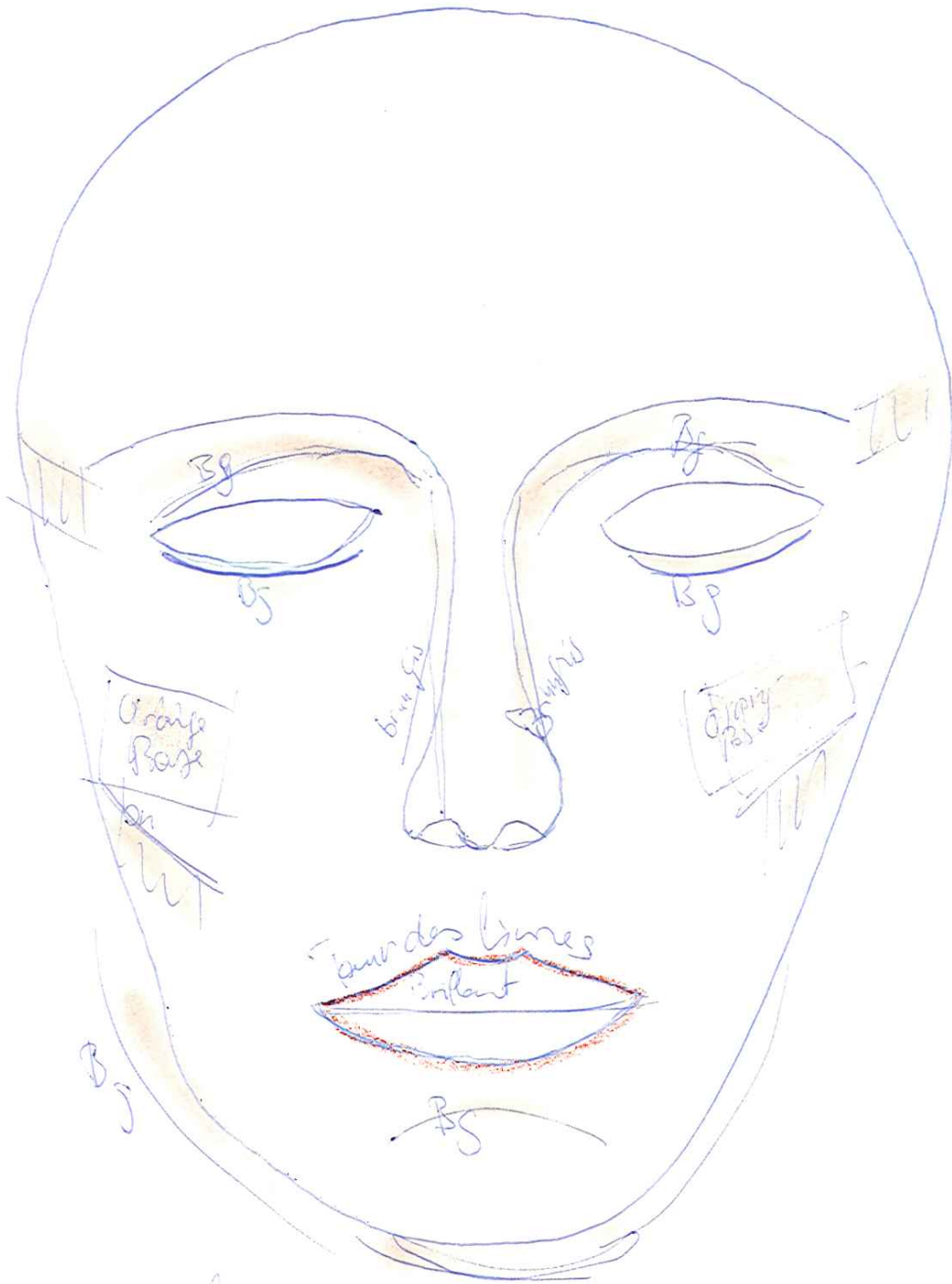


Horace

1/10/11



FdeT: 6 w Krydan
Brown essential 67 Baurjois

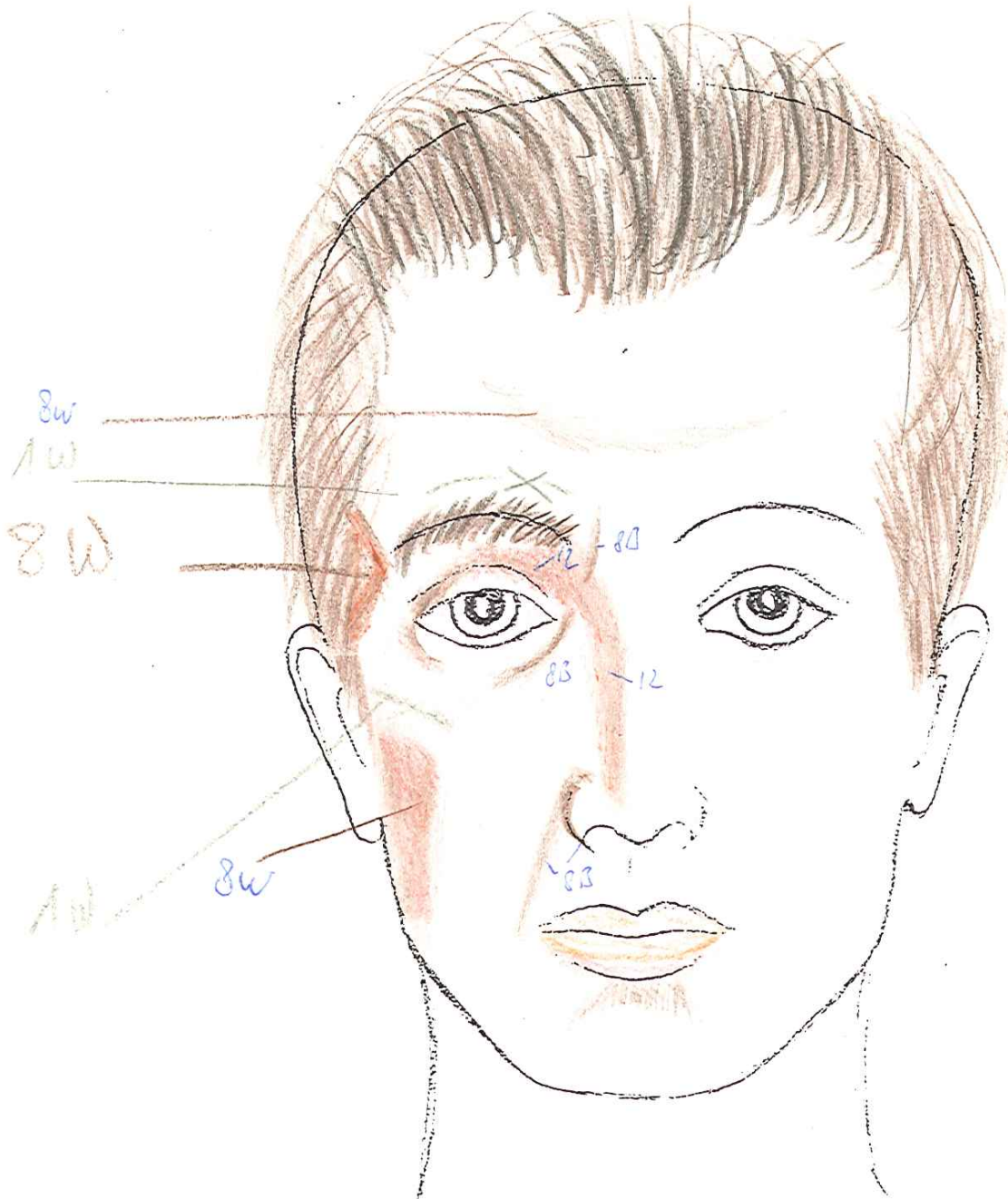
Arnold

Jacques



Nicolas

ETRIQUE



1° Teint de base = w 4

2° = w 1 lumière sur a.

3° 8w dessous, 10 w 4,

4° poudre

20 haut gros pinceau

3° pinceau 12B puis 8B

cl. de Phalange

6° lèvres w 4

trayon
trou de

7° postiches

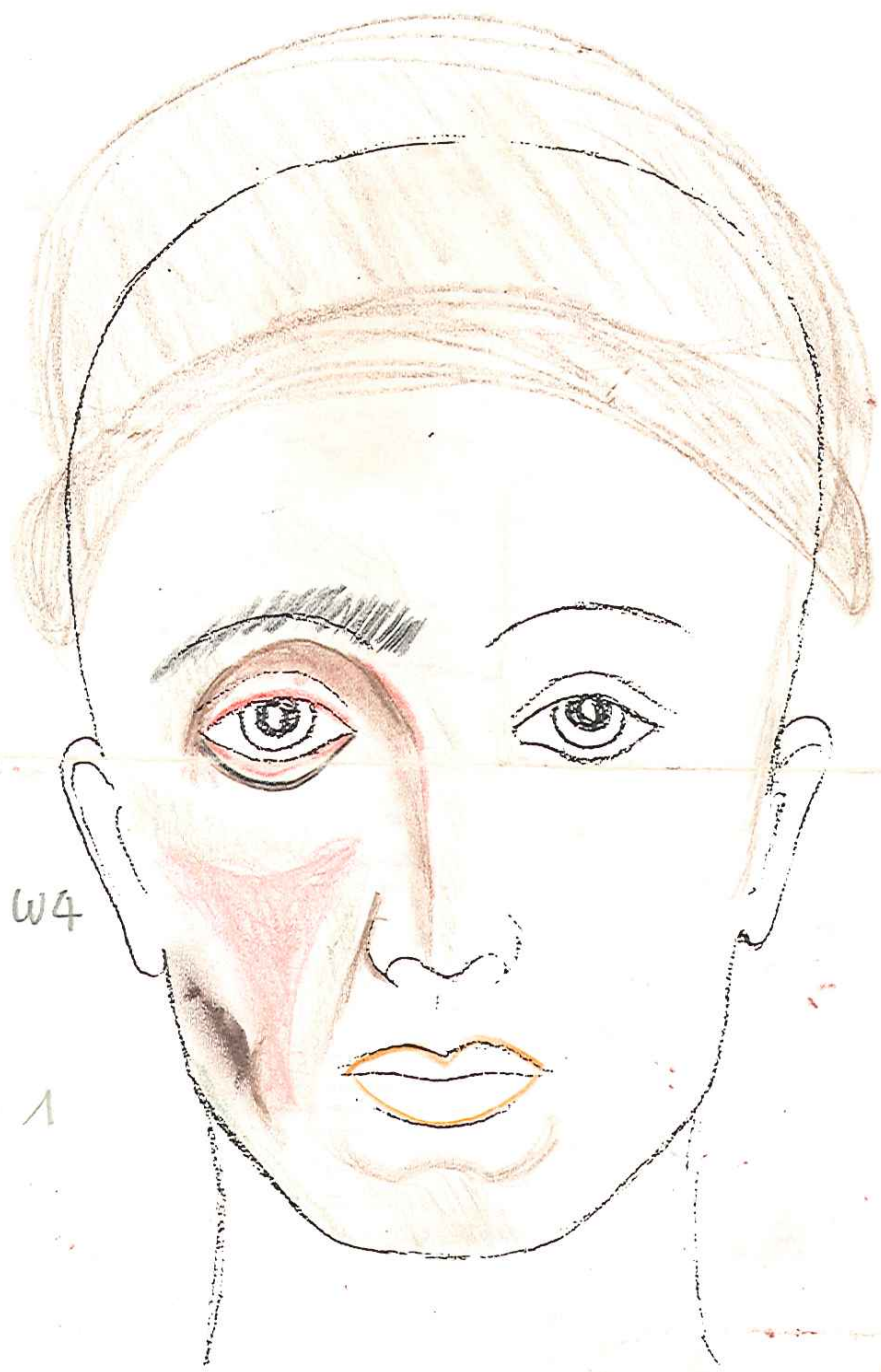
Chrisalde

Vesonique



Anna

Alain

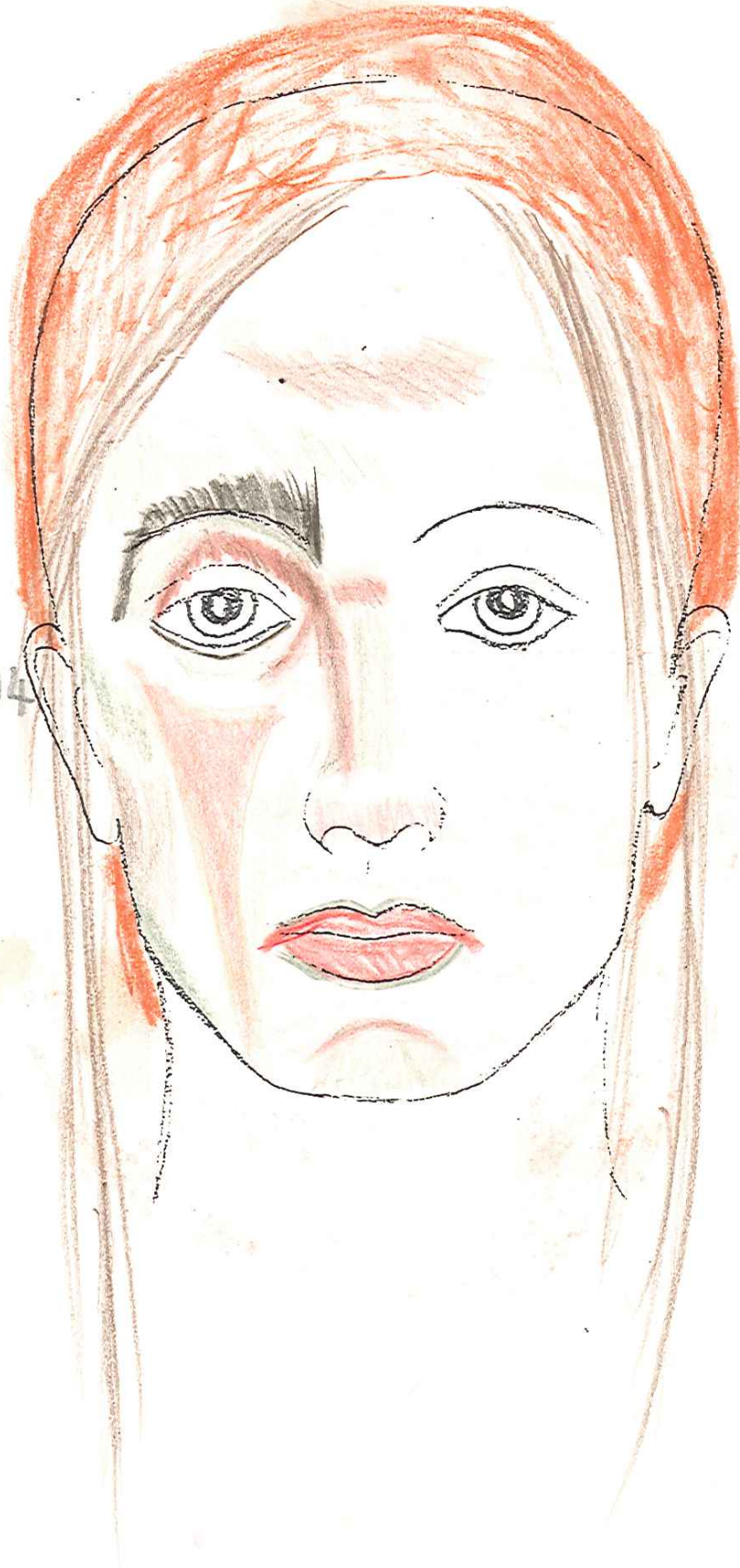


Teint base W4

W1 = W1

Genevieve

: Jeorgette



Tint de base W4

W1